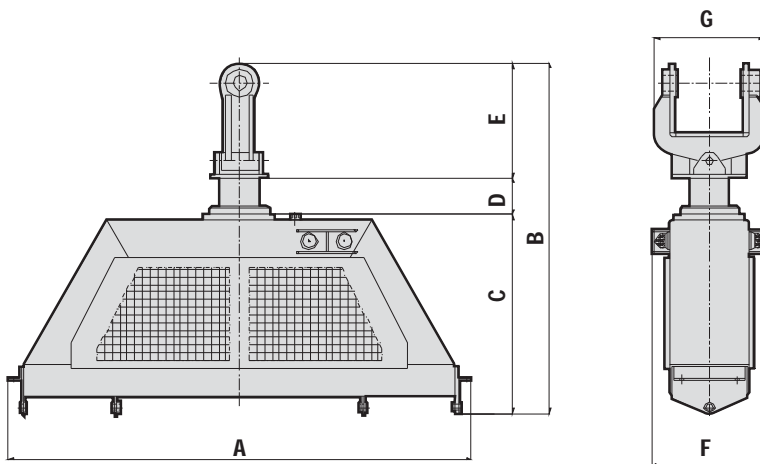


# VACUUM LIFTS SVL-90 / 130 / 220

CE Approved



## DIMENSIONS



## FEATURES

- Self-contained independent engine and vacuum pump
- For pipe sizes from 6" to 62"
- Utilize on hydraulic excavators, cranes and pipelayers
- Hydraulic rotator with horizontal stabilizer
- Suction pads available for any length and diameter

	SVL-90	SVL-130	SVL-220
<b>A</b>	284.5 cm / 112 in	284.5 cm / 112 in	284.5 cm / 112 in
<b>B</b>	190.3 cm / 74.9 in	223.1 cm / 87.8 in	233.1 cm / 91.8 in
<b>C</b>	91.9 cm / 36.2 in	124.8 cm / 49.1 in	134.8 cm / 53.1 in
<b>D</b>	23.9 cm / 9.4 in	23.8 cm / 9.4 in	23.8 cm / 9.4 in
<b>E</b>	74.5 cm / 29.3 in	74.5 cm / 29.3 in	74.5 cm / 29.3 in
<b>F</b>	67 cm / 26.4 in	72 cm / 28.4 in	72 cm / 28.4 in
<b>G</b>	89.1 cm / 35 in	89.1 cm / 35 in	89.1 cm / 35 in
<b>Weight</b>	950 kg / 2,094 lbs	1500 kg / 3,307 lbs	2000 kg / 4,409 lbs

# VACUUM LIFTS SVL-90 / 130 / 220

## SPECIFICATIONS



### TECHNICAL FEATURES

- Fully self contained unit can be hooked up in a matter of seconds.
- Power source is a self contained diesel engine with electric start and 100 liter (26 gal) fuel tank.
- Vacuum source is a rotary vane pump with oil circulation.
- Can be controlled by machine operator by direct-connected cable or by remote control.
- Both types of controllers have many fail-safe features.
- A visual-audio alarm warns against lifting if vacuum is insufficient.
- Double set of lugs to hold any single or double suction pad arrangement
- Quick fittings for easy pad change.
- Only the suction pad must be changed to switch to a different pipe diameter.
- Horizontally stabilized.



### ADVANTAGES

- Fewer ground personnel required, which reduces the risk of accidents and reduces your cost.
- No damage to the pipe coating or pipe bevel.
- Pipe can be stockpiled without spacers.
- Any coating can be handled, including concrete or bare steel.
- Much quicker and therefore more economical than pipe hooks, pipe forks, or pipe tongs.



### ENGINE

#### SVL-90

Type	YANMAR L48E
Rated power	2.7 Kw - 3.8 HP
Diesel capacity	2.7 U.S. gal - 10 liters

#### SVL-130 / 220

Type	YANMAR L100AE
Rated power	7.4 Kw - 10 HP
Diesel capacity	26 U.S. gal - 100 liters



### VACUUM PUMP

Vacuum pump capacity (SVL-90)	1,767 cu ft/h - 50 m <sup>3</sup> /h
Vacuum pump capacity (SVL-130)	3,531 cu ft - 100 m <sup>3</sup> /h
Vacuum pump capacity (SVL-220)	6,180 cu ft - 175 m <sup>3</sup> /h
Suction pressure	40 mbar



### HYDRAULIC ROTATOR

#### SVL-90

Maximum axial load of rotator	22,000 lbs - 10 metric tons
Maximum torque	350 daNm
Maximum rotation pressure	4,640 p.s.i. - 320 bar
Oil flow volume	5 U.S. gal/min - 20 liters/min
Rotation	Continuous

#### SVL-130

Maximum axial load of rotator	33,000 lbs - 15 metric tons
Maximum torque	380 daNm
Maximum rotation pressure	4,640 p.s.i. - 320 bar
Oil flow volume	5 U.S. gal/min - 20 liters/min
Rotation	Continuous

#### SVL-220

Maximum axial load of rotator	55,000 lbs - 25 metric tons
Maximum torque	840 daNm
Maximum rotation pressure	4,640 p.s.i. - 320 bar
Oil flow volume	8 U.S. gal/min - 30 liters/min
Rotation	Continuous



# VACUUM LIFTS SVL-90 / 130 / 220



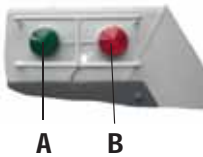
## SUCTION PAD

MODEL	LENGTH	WIDTH	HEIGHT	WEIGHT	PIPE RANGE	CAPACITY
PD 4	4.3 m/14 ft	22 cm/8.6 in	28 cm/11 in	75 kg/165 lbs	4"	1,250 kg
PD 6 – 8	5.5 m/18 ft	25 cm/9.8 in	32 cm/12.6 in	210 kg/463 lbs	6"-8"	1,600 kg
PD 10 – 14	6.3 m/20.7 ft	32 cm/12.5 in	42 cm/16.6 in	386 kg/851 lbs	10"-14"	3,000 kg
PD 16 – 22	6.3 m/20.7 ft	35 cm/14 in	42 cm/16.6 in	435 kg/959 lbs	16"-22"	4,000 kg
PD 24 – 32	6.3 m/20.7 ft	41 cm/16.2 in	42 cm/16.6 in	530 kg/1,169 lbs	24"-32"	6,000 kg
PD 34 – 42	6.3 m/20.7 ft	51 cm/20.1 in	45 cm/17.8 in	660 kg/1,455 lbs	34"-42"	7,700 kg
PD 42 – 48	7.3 m/20.7 ft	63 cm/25 in	49 cm/19.3 in	790 kg/1,742 lbs	42"-48"	11,550 kg
PD 50 – 54	7.3 m/20.7 ft	79 cm/31.1 in	54 cm/21.3 in	1,210 kg/2,668 lbs	50"-54"	15,000 kg
PD 56 – 62	7.3 m/20.7 ft	89 cm/35 in	55 cm/21.6 in	1,450 kg/3,197 lbs	56"-62"	18,000 kg

Note: special suction pads available upon request

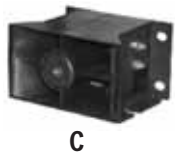
## SUCTION PADS FOR DOUBLE JOINTED 24 M/80 FT PIPE

PD 24 – 32	12 m/39.4 ft	38.5 cm/15 in	42 cm/16.5 in	1100 kg/2,425 lbs	24"-32"	10 Ton
PD 34 – 42	12 m/39.4 ft	53 cm/21 in	45 cm/18 in	1400 kg/3,086 lbs	34"-42"	13 Ton
PD 42 – 48	12 m/39.4 ft	63 cm/25 in	49 cm/19.2 in	1600 kg/3,527 lbs	42"-48"	19 Ton



### Green Flashing Light (A)

Indicates that the necessary bond between the pipe and the suction pad has been reached, and the pipe can be safely maneuvered.



### Red Flashing Alarm Light (B)

Indicates the lack of adequate vacuum pressure in the system or an improper bond between the pipe and the pad. DANGER!!!



### Alarm sound indicator (C)

Makes loud alarm sound simultaneously with Red Flashing Alarm Light (B).



### Control board (D)

includes engine start-up key and



### Manometer (E)

for vacuum pressure measurement between pipe and suction pad. Both items D and E are to be placed in operator's cabin.



### Remote control (F)

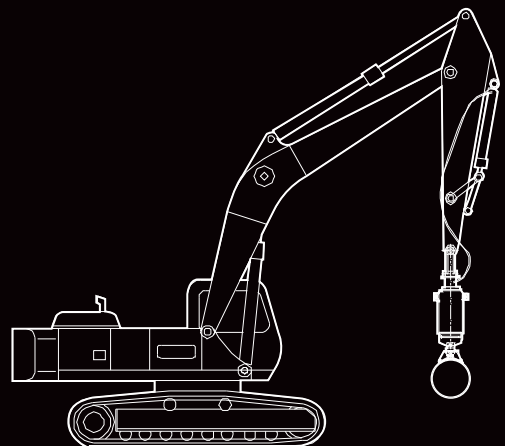
serves to control the operation without the use of a connected electric cable. This control will apply and release the vacuum. As an option, it can also control the rotation of the rotator.

## VACUUM LIFT

MODEL	CAPACITY
SVL-90	9,000 kg/19,842 lbs
SVL-130	13,000 kg/28,660 lbs
SVL-220	22,000 kg/48,502 lbs

Note: any pad can be used on any of the 3 sizes of vacuum lifts.

## RECOMMENDED EXCAVATORS



**SVL-90:** 20/30 ton machine

**SVL-130:** 25/35 ton machine

**SVL-220:** 45/55 ton machine

# CONTACT INFORMATION & DISCLAIMER

## Main office – General inquiries SUPERIOR Manufacturing

16031 East Freeway  
Channelview, TX 77530  
U.S.A.  
Phone 281.457.4400  
Fax 281.452.5455  
U.S. Toll Free 800.383.2666  
Intl. Toll Free 800.9675.3948  
pipeline@wwmach.com  
www.worldwidemachinery.com

## Italy office SUPERIOR Manufacturing

Via Roma, 18  
San Pancrazio, Parma  
Italy

## Evan Greenberg

Vice-President of Intl. Operations

## Worldwide offices Europe and Australia

Juergen Hafemann  
Phone +49.0.231.963.3073 Germany  
Phone +61.0.400.144.432 Australia  
pipelinece@wwmach.com

## India

Abhishek Bhotika  
Phone +91.11.414.59230  
pipelineind@wwmach.com

## Africa

Evan Greenberg  
Phone +1.281.452.5800  
pipeline@wwmach.com

## Russia, China and the Middle East

Sergio Braoude  
Phone +39.349.198.1281 Italy  
Phone +7.495.507.4827 Russia  
fsupipeline@wwmach.com

## Latin America

Salvador Villasana  
Phone +52.81.8.394.0160  
pipelinesa@wwmach.com

## North America

Rick Layh  
Phone +1.281.457.4400  
pipelinena@wwmach.com



## DISCLAIMER

The information contained in this brochure is intended to be of a general nature only. The SUPERIOR Manufacturing Company may at any time and from time to time, for technical or other necessary reasons, modify any of the details or specifications of the product described in this brochure. Illustrations do not necessarily show products in standard conditions. The dimensions, weights and capacities shown herein, as well as any conversion data used, are approximate only and are subject to variations within normal manufacturing techniques.